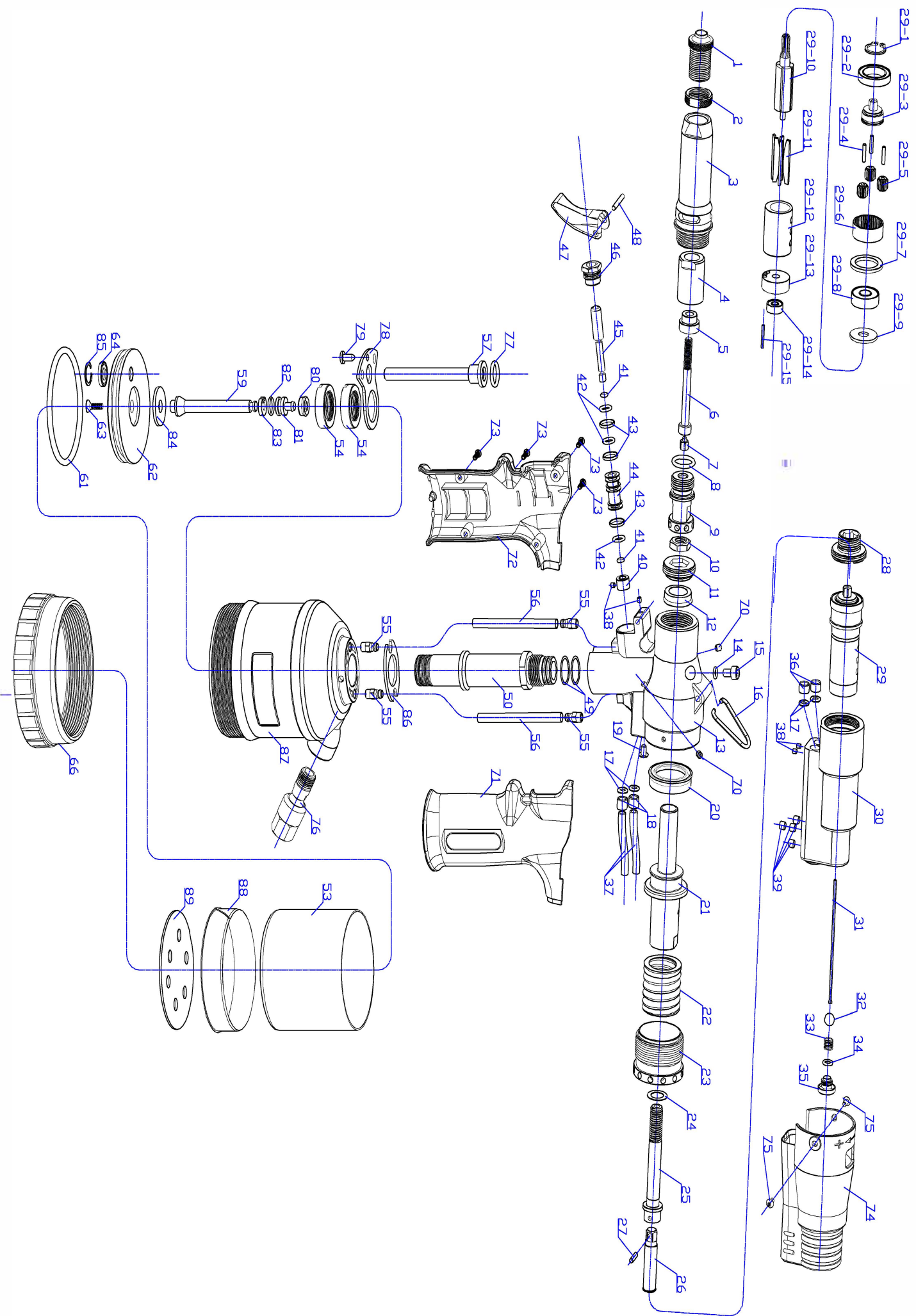


OS-1560F GAV HAVALI SOMUNLU PERÇİN



NO.	DESCRIPTION	QTY	NO.	DESCRIPTION	QTY	NO.	DESCRIPTION	QTY
1A	M3 nosepiece	1	21	hydraulic piston	1	64	O ring	1
1B	M4 nosepiece	1	22	spring	1	66	bottom	1
1C	M5 nosepiece	1	23	spring seat	1	70	metric machine screw (M4)	2
1D	M6 nosepiece	1	24	spacer (steel)	1	71	handle-left	1
1E	M8 nosepiece	1	25	movement pivot(front part)	1	72	handle-right	1
1F	M10 nosepiece	1	26	movement pivot(rear part)	1	73	tapping screw	4
2	lock nut	6	27	spring pin	1	74	end cap	1
3	outer cylinder	1	28	connector	1	75	button socket HD screw	1
4	inner cylinder	1	29	air motor	1	76	air connector	1
5A	adaptor nut for M3 mandrel	1	30	air motor casing	1	77	O ring	1
5B	adaptor nut for M4 mandrel	1	31	push rod	1	78	clamp plate	1
5C	adaptor nut for M5 mandrel	1	32	ball(nylon)	1	79	tapping screw	1
5D	adaptor nut for M6 mandrel	1	33	forward spring	1	80	lip seal	1
5E	adaptor nut for M8 mandrel	1	34	O ring	1	81	oil tube piston	1
5F	adaptor nut for M10 mandrel	1	35	screw plug	1	82	O ring	1
6A	M3 mandrel	1	36	set ring (copper)	2	83	piston ring	1
6B	M4 mandrel	1	37	air supply tube Φ5	2	84	washer	1
6C	M5 mandrel	1	38	metric machine screw (M3)	4	85	retaining ring	1
6D	M6 mandrel	1	39	metric machine screw (M5)	4	86	washer	1
6E	M8 mandrel	1	40	valve rod seat	1	87	plastic cylinder	1
6F	M10 mandrel	1	41	O ring	2	88	spacer	1
7A	drive shaft for M3 mandrel	1	42	O ring	3	89	cushion	1
7B	drive shaft for M4 mandrel	1	43	carbon fiber ring	3	29-1	circlip	1
7C	drive shaft for M5 mandrel	1	44	valve spool	1	29-2	bearing	1
7D	drive shaft for M6 mandrel	1	45	valve rod	1	29-3	gear seat	1
7E	drive shaft for M8 mandrel	1	46	valve set nut	1	29-4	gear spindle	3
7F	drive shaft for M10 mandrel	1	47	trigger	1	29-5	planet gear	3
8	O ring	1	48	pin	1	29-6	crown wheel	1
9	spindle	1	49	O ring	2	29-7	spacer	1
10	set nut	1	50	oil tube	1	29-8	bearing	1
11	retaining nut	1	53	air cylinder	1	29-9	front end plate	1
12	lip seal	1	54	lock nut	2	29-10	tolor	1
13	oil cylinder	1	55	air connector (M6)	4	29-11	vane	5
14	O ring	1	56	air tube(Φ6)	2	29-12	stator	1
15	bleed screw	1	57	air supply tube	1	29-13	rear end plate	1
16	hook	1	58	spring	1	29-14	bearing	1
17	O ring	4	59	piston rod	1	29-15	pin	1
18	set ring (copper)	2	61	O ring	1			
19	button socket HD screw	1	62	pneumatic piston	1			
20	lip seal	1	63	CSK socket HD screw	1			